

CL&P



& You



**Connecticut
Light & Power**

The Northeast Utilities System

important information for our valued customers

Building a Stronger Grid

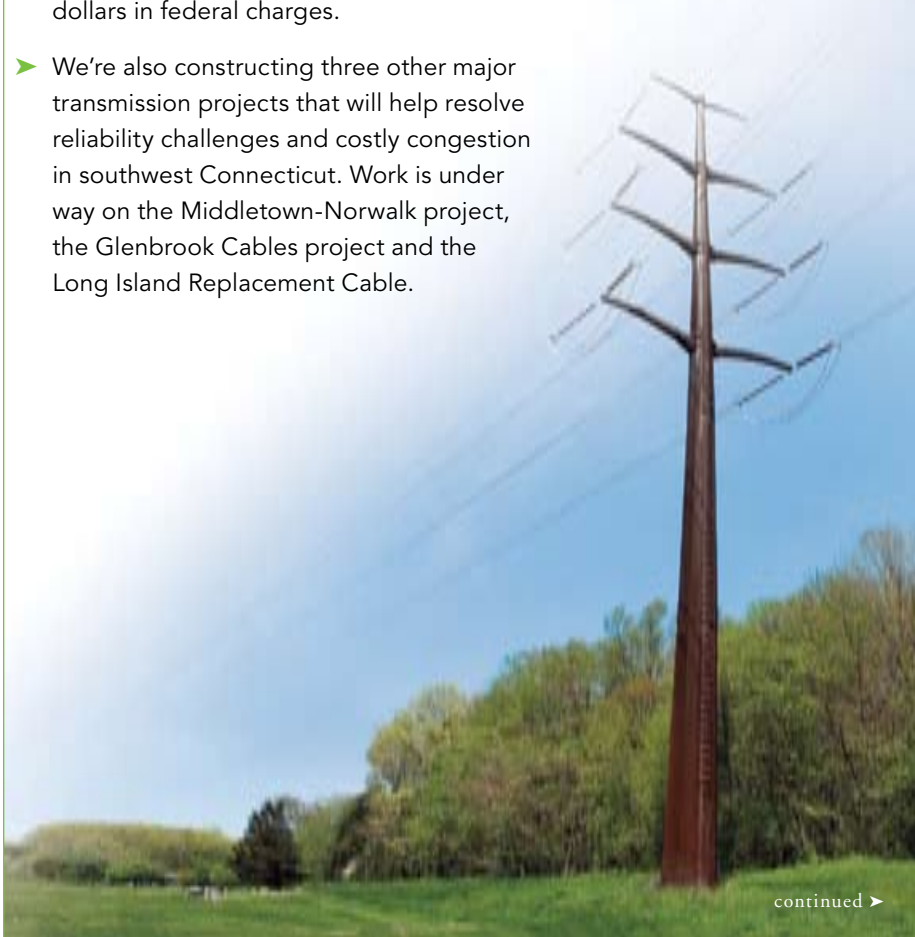
CL&P's transmission projects are part of the most dramatic reliability improvements in New England's electric infrastructure in 25 years. As one of the foremost authorities on new transmission construction in the country, we are supporting continued growth in the Northeast.

By balancing the needs of local communities with the energy demands of the region's nearly 5 million customers, we're building the right solutions at the right time.

- The Bethel-Norwalk project in Connecticut, completed in 2006 ahead of schedule and under budget, has already saved customers millions of dollars in federal charges.
- We're also constructing three other major transmission projects that will help resolve reliability challenges and costly congestion in southwest Connecticut. Work is under way on the Middletown-Norwalk project, the Glenbrook Cables project and the Long Island Replacement Cable.

Summer Saver Rewards

You can save energy and the environment while fighting the rising cost of energy. Just reduce your home or business energy use by at least 10 percent from July 1 to September 30, 2007 and you'll get a credit on the billed generation charge of your November electric bill. To become a Summer Saver, call 877.WISE.USE (877.947.3873). For more information, visit www.cl-p.com.





25th Business Women's Conference

October 26, 2007
Connecticut
Convention Center
Hartford, CT

CL&P is proud to sponsor the Business Women's Forum 25th Annual Conference. This one-day conference continues to grow and be a resource for women in business and for those seeking to expand their career options. CL&P has been a key supporter of this event for more than 20 years.

For more information call 203.757.0701 or visit www.2007bwf.com.

SAFETY FIRST

Problems in home wiring, such as sparking and arcing, cause more than 40,000 fires each year. A safety device called an arc fault circuit interrupter, or AFCI, provides protection from fires caused by unsafe home wiring conditions. Older homes with ordinary circuit breakers may benefit from the extra protection. For more information, talk to an electrician or building inspector.

- More new projects, part of the New England East-West Solution, are in the early design and development stage. They are vital to meeting regional and national reliability standards.

When these projects are placed into service, the region will have a stronger power grid. There will also be lower congestion and related federal costs.

Managing our day-to-day construction projects, we work hard to make sure that our operations are safe, reliable and environmentally responsible.

Environmental benefits

The upgraded transmission lines will connect customers to state-of-the-art generation plants elsewhere in the region while lessening the need to run older, less-efficient power plants. This will decrease air emissions – good for the earth, and for all of us.



Who Knew?

Every month, more than 63,000 CL&P customers pay their bills online.

Join the trend. It's convenient, secure and simple. Register today at www.cl-p.com. If you wish, you could also receive and pay other bills, too, through our partnership with CheckFree. No paper. No checks. No stamps. No worries. Give e-billing a try. Visit www.cl-p.com today.



**Connecticut
Light & Power**

The Northeast Utilities System

Energy for a Changing World™

Receive and pay your CL&P bill online, anytime at www.cl-p.com.
Question about your CL&P bill? Call us at 1.800.286.2000
(860.947.2000 in Hartford/Meriden).

© 2007 Northeast Utilities Service Company

This insert is paid for by CL&P customers and NU shareholders. ♻️ CD09071.25MM